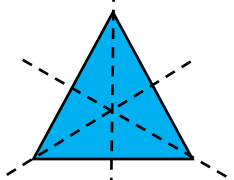
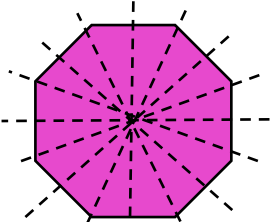


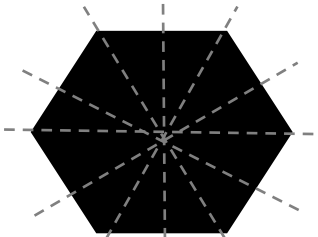
**Regular Polygons**  
(All sides and angles are equal)



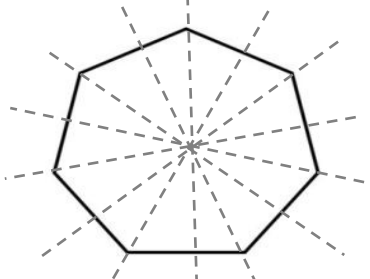
Equilateral Triangle  
3 lines of symmetry



Regular Octagon (8 sides)  
8 lines of symmetry



Regular Hexagon (6 sides)  
6 lines of symmetry



Regular Heptagon (7sides)  
7 lines of symmetry

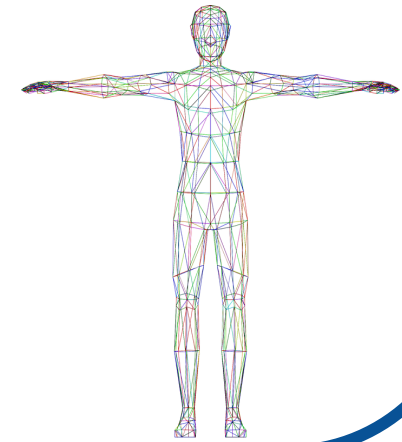
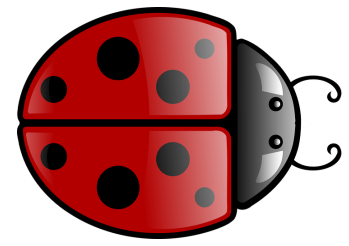
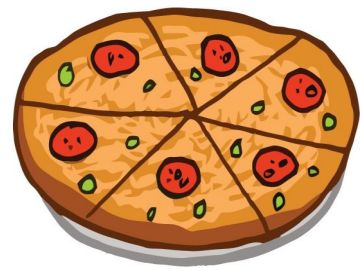
# Symmetry

Lines of symmetry can be:

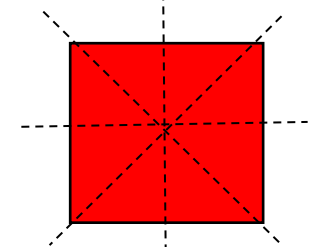
oblique \ horizontal ----- vertical |

**Radial  
Symmetry**

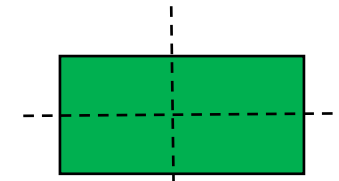
**Mirror, line,  
bilateral or reflexional  
symmetry**



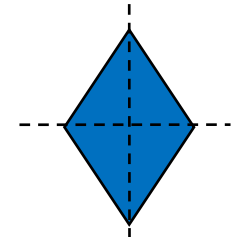
**Quadrilaterals**  
(4 sides)



Square  
4 lines of symmetry



rectangle  
2 lines of symmetry



Rhombus  
2 lines of symmetry

**Circle**

Infinite lines of symmetry

