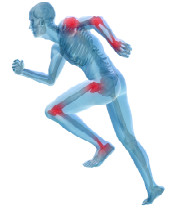
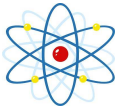


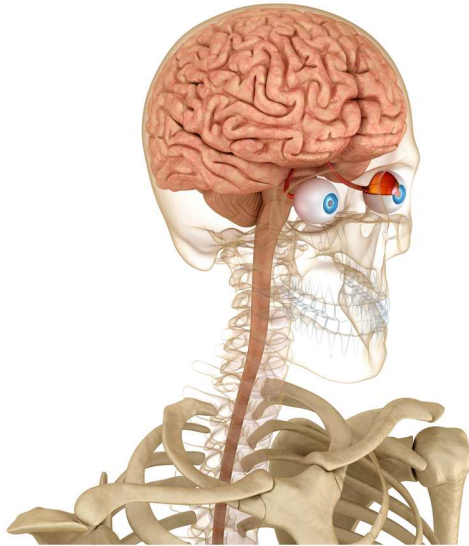
Name: \_\_\_\_\_



# 10 Minutes with Science



## The Eyes



The eyes are two visual organs found on the face, specifically in the eye socket (a hollow area in the skull). This hollow area protects the eyes. They are also protected by the eyelids, which open and close involuntarily all the time. The eyelids are also covered with eyelashes. Eyelashes keep the eye clean of dust, dirt, and other substances.

The main function of the eye is to see the world around us to give us information about it: colors, shapes, sizes of things, movement. We use our eyes from the time we get up until we go to bed.

The size of the eyes varies from one person to another, but it is about the size of a ping pong or table tennis ball.

Although it seems that seeing through your eyes is a simple process, it is not. When the eye opens, light is detected from the outside and this information travels through the neurons to the brain through the optic nerve.

