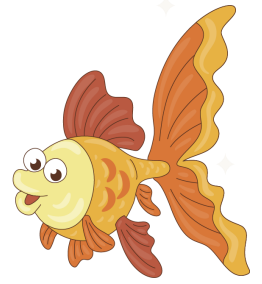




Animal of the World: Fish

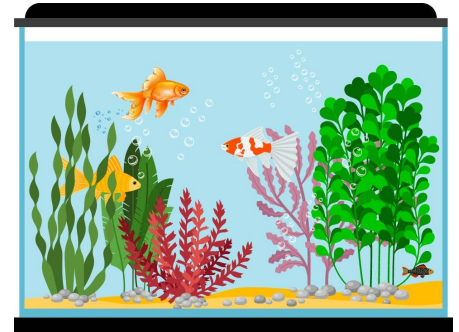
GOLDFISH



The goldfish is the quintessential domestic aquatic animal. It was one of the first species of fish to be used as pets, and today, they are the ones that predominate in the fish tanks of all homes in the world.

This fish can live in any area with fresh water, so it has a surprising adaptive capacity. They can only live in freshwater rivers and lakes, so it is impossible to find them in the ocean. They are native to East Asia, that is, China, where they were used as pets for the first time more than a thousand years ago.

Experts who have studied these fish say they do better in captivity than in their natural habitat. The most important thing for them is that the water is at an optimal temperature of 68 degrees Fahrenheit, with 10 gallons for each small goldfish and 20 gallons for each large goldfish.



They are usually between 4 and 24 inches long, depending on the size of the pond and the amount of food they consume. Some specimens can measure up to 36 inches in very favorable conditions. Its weight can range from half a kilo to fifteen kilograms.

Its most common colors are yellow and orange. However, there are goldfish with other colors, such as blackish, whitish, reddish, gold, bluish, and albino.

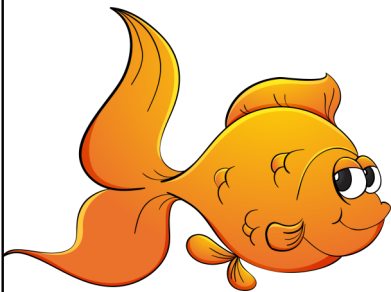


They are extremely calm and friendly fish, so they coexist well with other fish in an aquarium or pond. They usually stay together as a group to protect each other from possible threats.

Goldfish are omnivorous, so they eat both plants and other animals. In its natural habitat, its diet is composed of insects, larvae, and eggs of other species. It is for this reason that the goldfish is considered a predator in its natural environment.



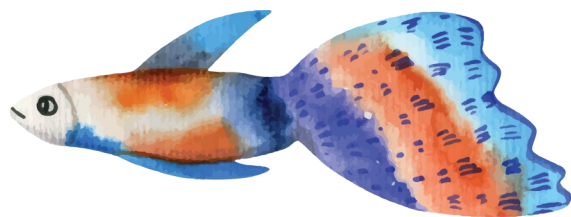
They are long-lived and resistant fish that can live in optimal conditions for 15 to 40 years. They reach sexual maturity at 2 years of age. When food and environmental conditions are favorable, goldfish reproduce extremely effectively.



The male chases the female until she releases the eggs on some rock or alga, to be later fertilized externally by the male. She can spawn between 300 and 2,000 eggs, and they are capable of spawning more than once in the same reproductive period.

The eggs usually hatch in the next 48–72 hours, depending on the water temperature. The hatchlings can reach their final form after a few weeks. Its final color can be developed after a year of life.

Goldfish are a plague in some lakes, rivers, and swamps where they were artificially introduced and where they do not have any type of predator, so they grow to a large size and feed on the eggs of the rest of the fish without allowing them to reproduce.



Name _____

Date _____

GOLDFISH

Answer the following questions.

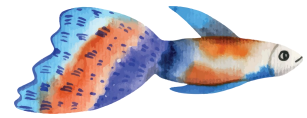
1. Which of the following is true about goldfish?

- a. They are found in many different oceans.
- b. They can only survive in fresh water.
- c. They are native to South America.
- d. All of the above



2. Goldfish have become very popular as _____.

- a. a pet
- b. food on a menu
- c. the main subject of movies
- d. a good luck charm



3. Like their name suggests, goldfish are always orange in color.

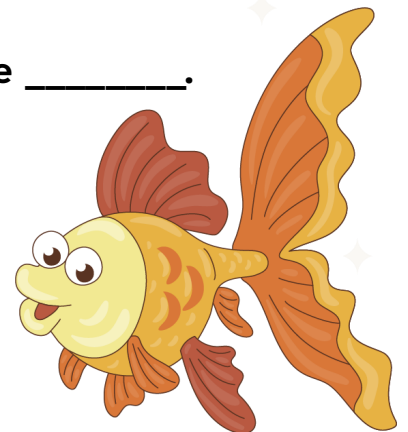
- a. True
- b. False

4. Goldfish are omnivorous which means that _____.

- a. they only eat plants
- b. they are found in both fresh water and salt water
- c. they eat both other animals and plants
- d. they have a loud voice

5. It is good to have a goldfish in an aquarium because _____.

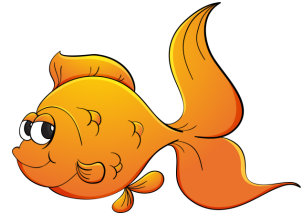
- a. they live for many years.
- b. they are calm and friendly.
- c. they do well in captivity.
- d. all of the above.



Name _____

Date _____

GOLDFISH

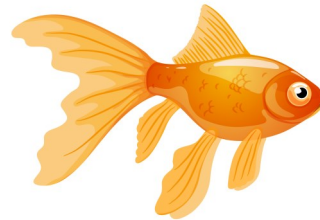


6. What is one way a goldfish protects itself?

- a. It changes colors and hide in plants.
- b. It injects poison into its enemies with a hidden stinger.
- c. It stays together with other goldfish as a group.
- d. It releases a cloud into the water to escape from an enemy.

7. Goldfish _____ in some lakes and rivers where they do not have a predator.

- a. do not live long
- b. help clean the water
- c. need companions
- d. are a plague



8. Using context clues in the selection, what does the word spawn mean?

- a. to produce or make
- b. to eat or digest
- c. to attack
- d. to hide or conceal



9. The water temperature is very important for a goldfish to survive and do well in an aquarium.

- a. True
- b. False

10. A goldfish is considered a predator because _____.

- a. goldfish steal the homes of other fish.
- b. goldfish hide with other fish.
- c. goldfish can change colors.
- d. goldfish eat insects, larvae, and eggs.

